



A RETAIL LEASING OPPORTUNITY:

Wall Street Place

61 WALL STREET, NORWALK CT

Retail Spaces for Lease

Get in on the ground floor of one of Norwalk's best places to locate your business!

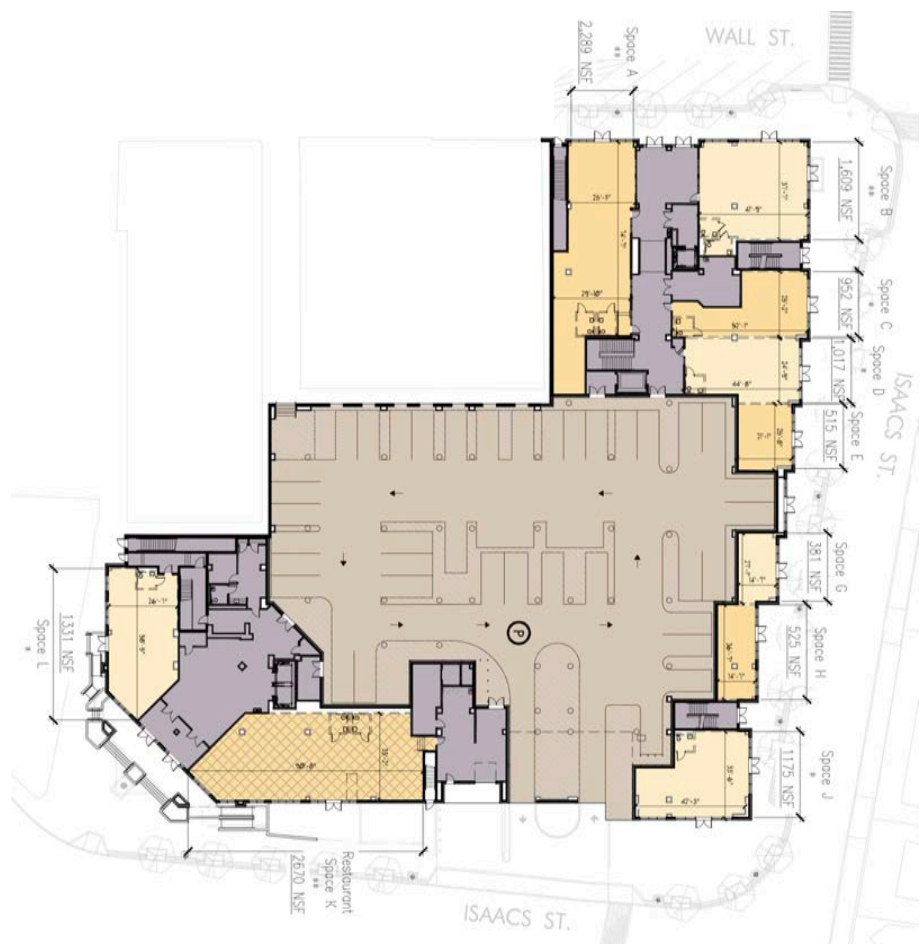


HATHAWAY



CONTACT 203.814.3361 • RENTALS@HATHAWAYPM.COM
HATHAWAY, INC. • 1387 SEAVIEW AVENUE, BRIDGEPORT, CT 06607 • HATHAWAYPM.COM

RETAIL SUMMARY	
Retail Space	Net Sq Ft
A	2,289 SF
B	1,609 SF
C	952 SF
D	1,017 SF
E	515 SF
G	318 SF
H	525 SF
J	1,175 SF
K	2,670 SF
L	1,331 SF
M	13,698 SF
Total	26,099 SF



NORTH, FIRST FLOOR PLAN

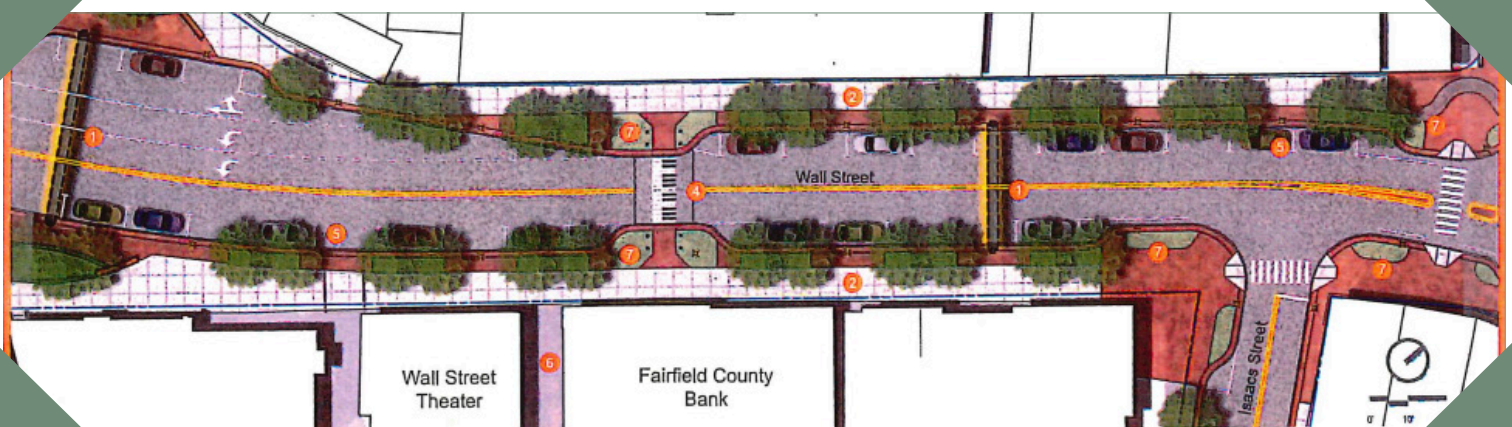
County: Fairfield
City: Norwalk

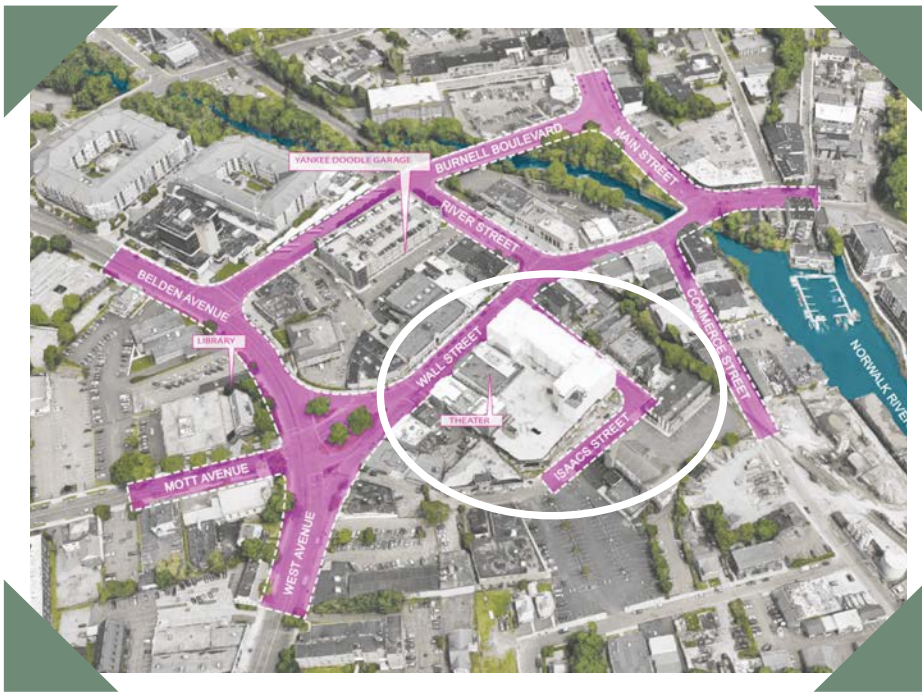
Available S.F.: 381 SF to 13,698 SF
Zoning: Central Business District (CBD)

Availability:
 July 2026

The North Building of the Wall Street Place offers ten retail spaces –located in the heart of historic downtown Norwalk. This is a generational chance to get in on the ground floor within this artistic community and build a home for your thriving business.

Each ground-floor space features high ceilings, large display windows, and is ready for your custom build-out. Employee and customer parking is available in the convenient Art Park Lot as well as on-street parking. The lower level offers 13,000+ S.F. for a full-sized fitness facility, educational space or a storage/warehouse option.



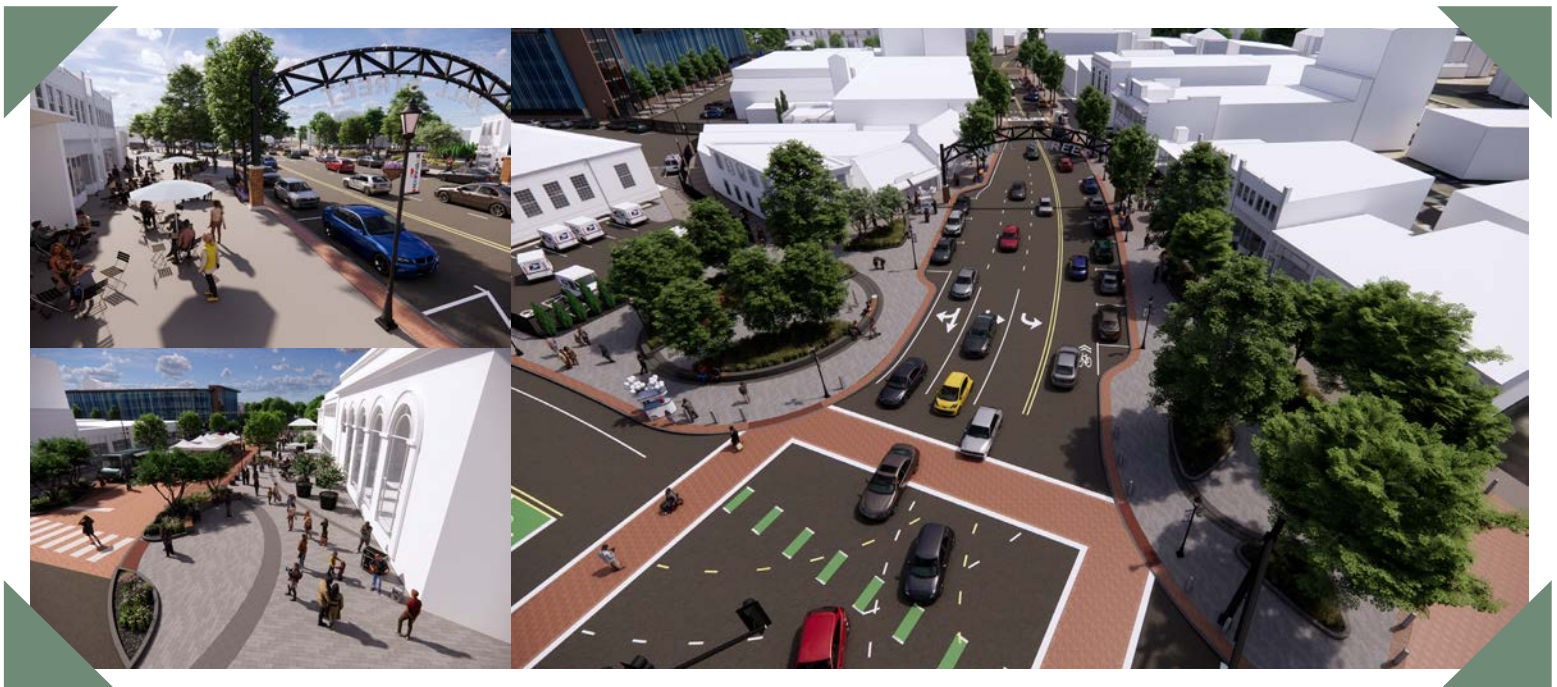


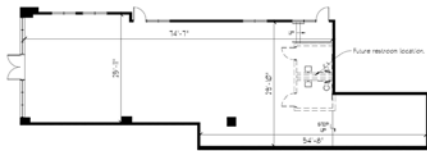
Work and thrive in the up-and-coming “Wall Street Corridor” located in the heart of Norwalk’s historic arts and entertainment district.

The City of Norwalk is heavily investing in the Wall Street Corridor, redeveloping infrastructure to attract businesses, residents, outdoor events and festivals and visitors. Your business will benefit from this, in addition to the 155 new residential units located directly above and across the street from these retail locations. Along with better public transportation options, improved traffic flow

and lighting, Norwalk is widening sidewalks, revamping pedestrian and bike connections, establishing public event spaces, and creating new landscaping and green spaces.

This is your time to be a part of Norwalk’s renaissance – and to **get in on the ground floor of one of the best spaces to live or to locate your business.**





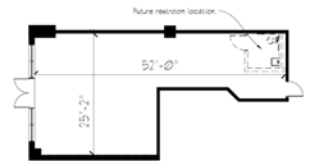
RETAIL SPACE A

Scale = 3/32" = 1'-0"
 ~ 2,289 NSF
 ~ Space with rough-in plumbing for 2 restrooms.
 ~ Terms: \$32/S.F. NNN



RETAIL SPACE B

Scale = 3/32" = 1'-0"
 ~ 1,609 NSF
 ~ Space with rough-in plumbing for 2 restrooms.
 ~ Terms: \$32/S.F. NNN



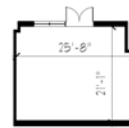
RETAIL SPACE C

Scale = 3/32" = 1'-0"
 ~ 952 NSF
 ~ Space with rough-in plumbing for 1 restroom.
 ~ Terms: \$30/S.F. NNN



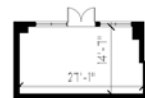
RETAIL SPACE D

Scale = 3/32" = 1'-0"
 ~ 1,017 NSF
 ~ Space with rough-in plumbing for 1 restroom.
 ~ Terms: \$28/S.F. NNN



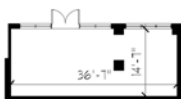
RETAIL SPACE E

Scale = 3/32" = 1'-0"
 ~ 515 NSF
 ~ Terms: \$20/S.F. NNN



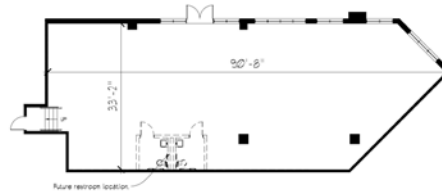
RETAIL SPACE G

Scale = 3/32" = 1'-0"
 ~ 381 NSF
 ~ Terms: \$25/S.F. NNN



RETAIL SPACE H

Scale = 3/32" = 1'-0"
 ~ 525 NSF
 ~ Terms: \$25/S.F. NNN



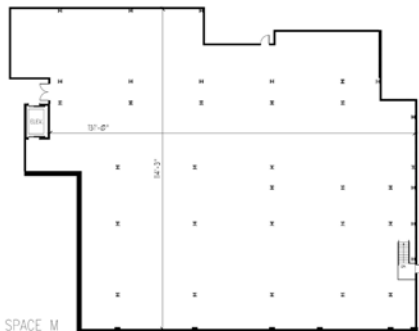
RETAIL SPACE K

Scale = 3/32" = 1'-0"
 ~ 2,670 NSF
 ~ Space with rough-in plumbing for 2 restrooms.
 ~ Terms: \$25/S.F. NNN



RETAIL SPACE L

Scale = 3/32" = 1'-0"
 ~ 1,331 NSF
 ~ Space with rough-in plumbing for 1 restroom.
 ~ Terms: \$25/S.F. NNN



RETAIL SPACE M

Scale = 1/8" = 1'-0"
 ~ 11,686 NSF
 ~ Terms: \$15/S.F. NNN



HATHAWAY

1387 SEAVIEW AVENUE, BRIDGEPORT, CT 06607
 RENTALS@HATHAWAYPM.COM
 HATHAWAYPM.COM